



## INDUSTRIAL FLOORING SYSTEMS

### Applications:

Manufacturing Facilities

Food & Beverage

Manufacturing Facilities

Fire, Rescue &

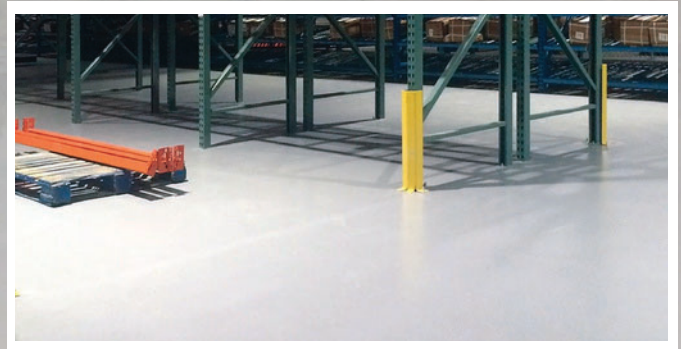
Public Safety Facilities

Technology Centers &

Data Storage Facilities

Education Facilities

Healthcare & Hospitality



## CPC Urethane Cement

A trowelled seamless industrial flooring system comprised of a specially formulated two-component epoxy resin formulation. Floors for industrial use including machine shops, meat packing and food processing areas, commercial freezers, certain types of kitchen service, toilet rooms and others.

### ADVANTAGES:

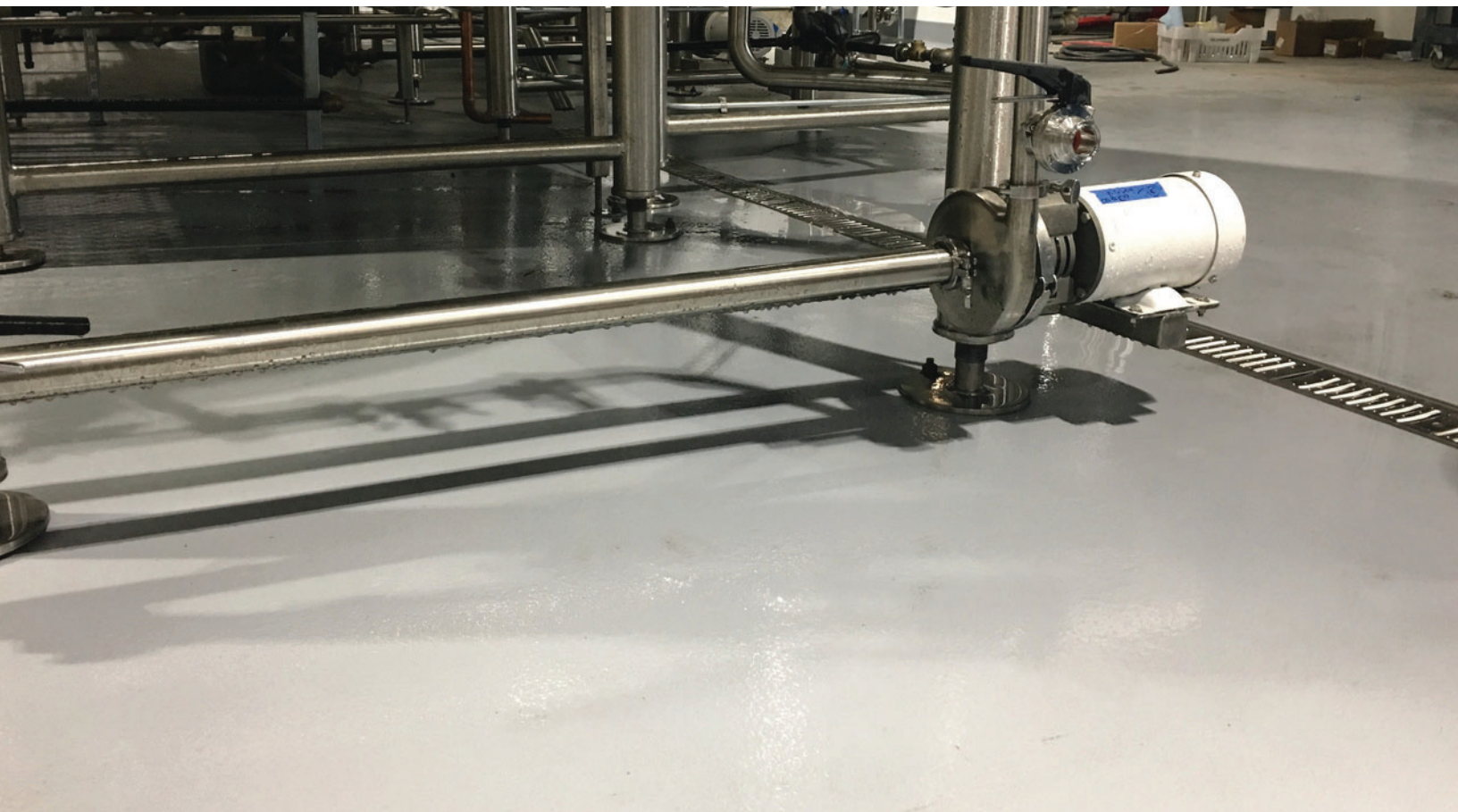
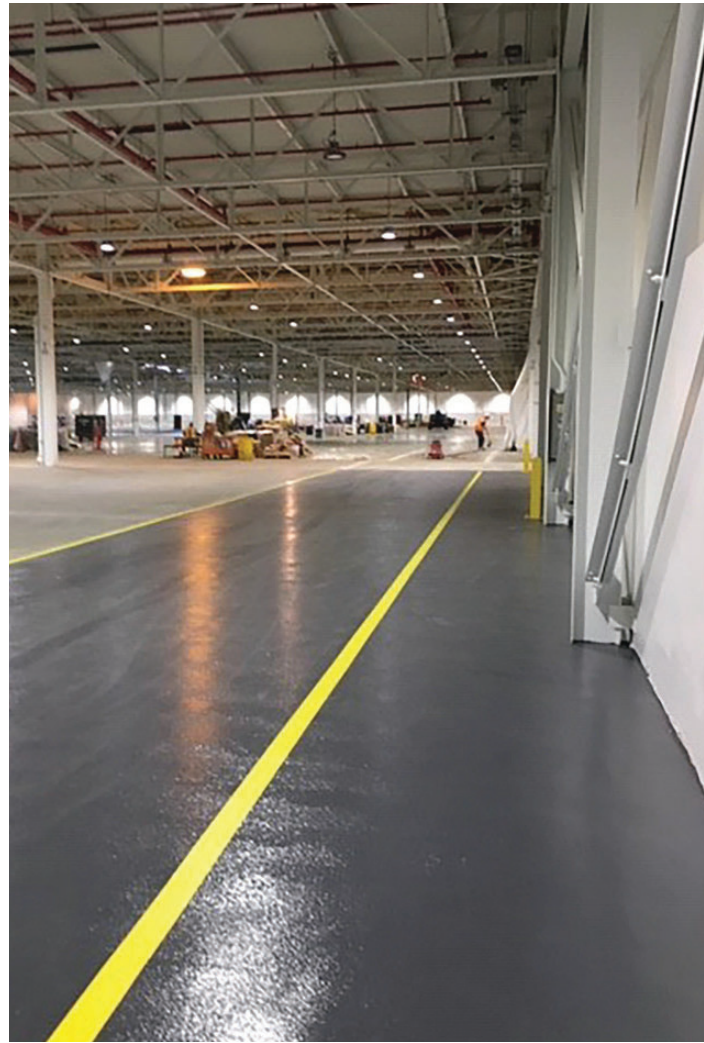
- Monolithic with integral cove base
- Chemical resistant
- Rapidly installed at a moderate cost
- Low-temperature stability

## CPC Urethane Cement Sealer

Urethane Cement Sealer is an aliphatic polyurethane resin mixed with a cementitious powder designed to be used as a topcoat for Urethane Cement Flooring Systems.

### ADVANTAGES:

- UV stable
- Excellent chemical resistance
- Minimal odor during installation
- Moisture tolerant
- LEED credit points may be available



# TECHNOLOGY & DATA CENTERS

## CPC ESD

CPC ESD is a fluid applied, monolithic, high solids epoxy flooring system, and is electro-static discharge for ESD sensitive environments.

### ADVANTAGES:

- Sanitary
- Excellent abrasion resistance
- Chemical resistant
- Monolithic, seamless
- More durable than tile or sheet goods when exposed to forklift traffic
- Low VOC



# FIRE, RESCUE & PUBLIC SAFETY

## CPC Pigmented Epoxy

CPC Pigmented Epoxy is a skid resistant flooring system consisting of an epoxy resin, hardener and special pre-engineered aluminum oxide aggregates. It is used in manufacturing operations, stairs, ramps, and walk-ways-both exterior and interior. The material can be applied over new or existing concrete, ceramic tiles, metal surfaces or CPC composition floors.

### ADVANTAGES:

- Can be applied over a wide range of surfaces
- No significant odor during installation
- Resists most common chemical spillage
- Wide range of color and profile selection



## **CPC Polyaspartic**

A state of the art, high solids, and UV stable, aliphatic elastomeric polyurea that applies and hardens quickly, and does not require the use of plural component spray apparatus.

### **ADVANTAGES:**

- Fast cure
- High elongation
- High tear strength
- Excellent abrasion resistance
- Displays excellent UV resistance
- High gloss finish
- Resistant to chemicals

## **CPC Colored Quartz Broadcast**

100% solids, seamless epoxy flooring system with a colored quartz broadcast and clear topcoat. Designed to withstand high abrasion and harsh chemicals and complies with USDA, ADA, & OSHA guidelines.

### **ADVANTAGES:**

- Self Priming
- Can be applied over a wide range of surfaces
- Low odor during installation
- Chemical Resistant
- Impact Resistant
- Antimicrobial additive available



## CPC Novalac

A seamless chemical and heat-resistant epoxy flooring system with superior physical and mechanical properties compared to conventional epoxy floors. Cross-linking provides greater resistance to chemical attacks from a very wide range of acids, alkalis, and solvents.

### ADVANTAGES:

- Monolithic and seamless
- Highly resistant to a wide range of chemicals
- Available in textures from smooth to aggressive
- Rapid return to service

## CPC Epoxy Flake System

A solid color, two-component, epoxy flooring system with a decorative flake broadcast and clear topcoat. It complies with USDA, ADA, & OSHA guidelines.

### ADVANTAGES:

- Self Priming
- Can be applied over a wide range of surfaces
- Low odor during installation
- Gloss finish
- Antimicrobial additive available
- Stain Resistant
- Easy Maintenance

## CPC Moisture Primer

CPC Moisture Mitigation Primer is a two component, 100% Solids, moisture mitigation system. It carries the ASTM-E-96 and meets F-3010 specification standard, reducing moisture levels as high as 24lbs/1000sqft/24 hours per ASTM F1869 or 99% RH per ASTM F2170. The epoxy primer is placed directly on properly prepared, durable concrete substrates.

### ADVANTAGES:

- Can be used under any type of resilient flooring (ie. VCT, carpet, hardwoods, linoleum)
- Excellent adhesion to green concrete
- Resistant to high PH levels
- 10 Year full replacement warranty available (Consult with Crossfield Product Corp.)



# CPC Epoxy/Urethane/Polyaspartic Color Chart



413 Speedway Gray



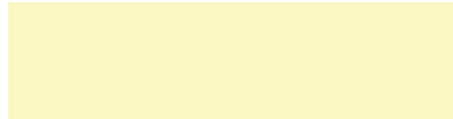
300 Bolsa



211 Green



431 Bright Gray



303 Ivory Cream



720 Medium Blue



411 Silver Bullet



304 Sandpiper Beige



310 Black



402 Dark Gray



503 Adobe



640 Safety Red



410 Graphite

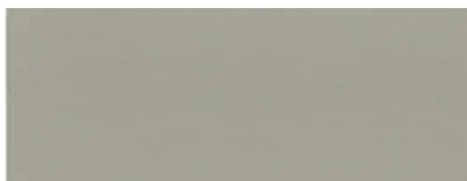


607 Brick Red



910 Safety Yellow

# CPC Urethane Cement Sealer Color Chart



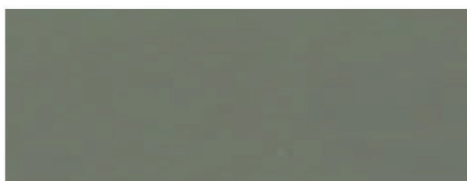
413 Speedway Gray



503 Adobe



211 Green



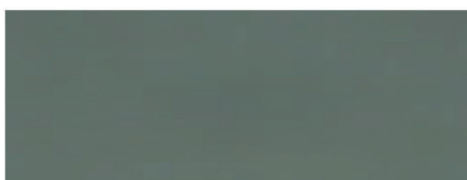
431 Bright Gray



624 Red



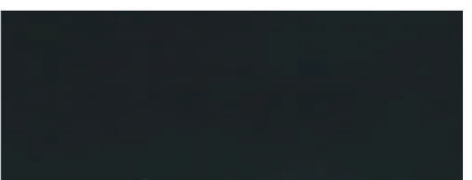
720 Medium Blue



402 Dark Gray



607 Brick Red



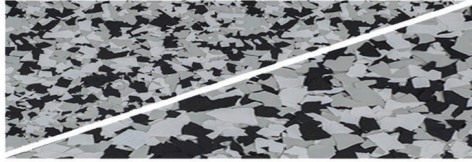
410 Graphite

**Consult your CPC Representative for more details.**

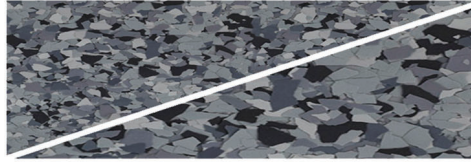
The actual colors can result in small deviations from the color chart due to the nature of the element that makes this Static Dissipative or Conductive. Printed color charts approximate actual color. Final color approval should be made from physical sample. Final color appearance is affected by lighting, surface texture, and method of application.

# CPC Flake Color Chart

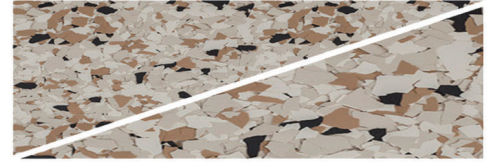
For Epoxy and Urethane Cement  
Flake Broadcast Systems



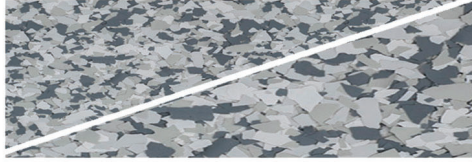
CPC-01



CPC-02



CPC-03



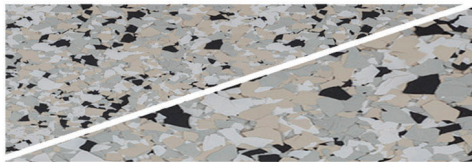
CPC-04



CPC-05



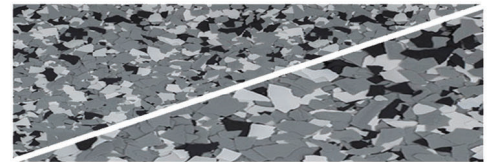
CPC-06



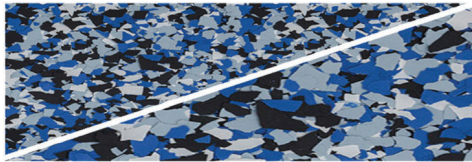
CPC-07



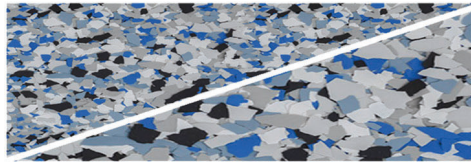
CPC-08



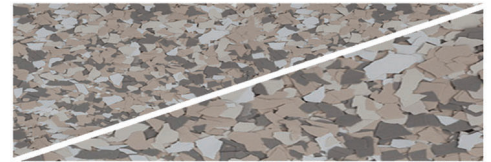
CPC-09



CPC-10

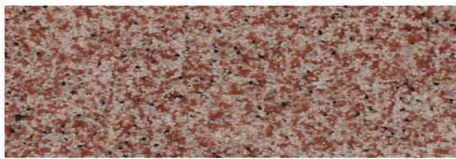


CPC-11

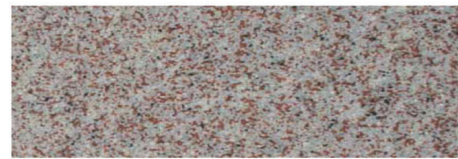


CPC-12

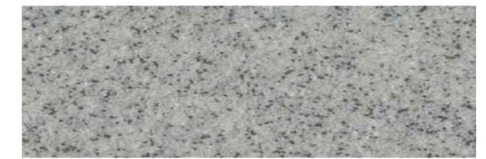
## CPC Quartz Color Chart



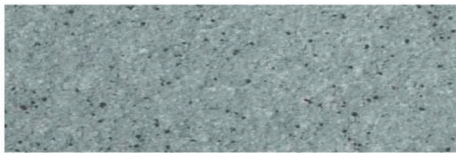
DFS-B-13



DFS-B-07



DFS-B-05



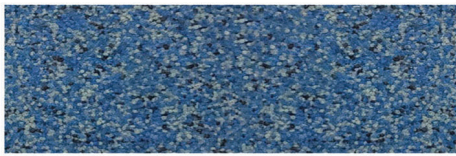
DFS-B-03



DFS-B-09



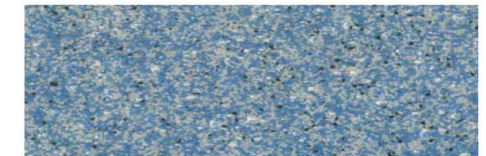
DFS-B-12



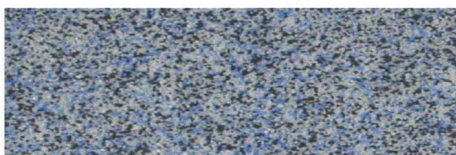
DFS-B-01



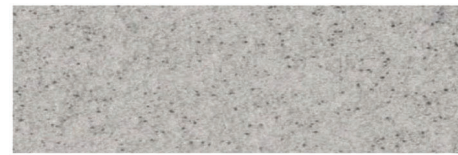
DFS-B-10



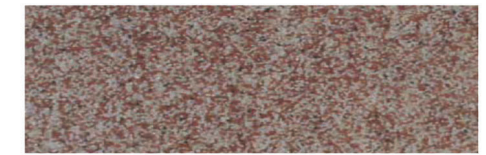
DFS-B-89



DFS-B-04



DFS-B-06



DFS-B-08

**Consult your CPC Representative for more details.**

The actual colors can result in small deviations from the color chart due to the nature of the element that makes this Static Dissipative or Conductive. Printed color charts approximate actual color. Final color approval should be made from physical sample. Final color appearance is affected by lighting, surface texture, and method of application.

Crossfield Products Corp. is the world leader in specialty polymeric and cementitious systems for waterproofing, restoration & protection of commercial, institutional and industrial facilities.

Since 1938, Crossfield Products Corp. has manufactured a vast array of systems for commercial, institutional, and industrial facilities.



**(210) 888-0449 Central**  
**(310) 886-9100 West Coast**  
**(908) 245-2800 East Coast**

**[www.cpccoatings.com](http://www.cpccoatings.com)**

